

# **Route 98**

*Updated: December 2011*

Junction with 56 north to Beryl May 14, 1935.

1953 Description:

From Route 56 between Newcastle and Modena northerly to Beryl.

**Approved by 1963 Legislature:**

**Approved by 1965 Legislature:**

**1967 Legislature:**

**1969 Legislature:**

Withdrawn as a State Route in Iron County and reassigned to Weber County.

1969 Description:

From SR-37 at Hooper east to SR-I08.

**1971 Legislature:** Description remains the same.

**1975 Legislature:** Description remains the same.

**1977 Legislature:** Description remains the same.

**1979 Legislature:** Description remains the same.

**1981 Legislature:** Description remains the same.

**1983 Legislature:** Description remains the same.

**1985 Legislature:** Description remains the same.

**1986 Legislature:** Description remains the same.

**1987 Legislature:** Description remains the same.

**1988 Legislature:** Description remains the same.

**1990 Legislature:** Description remains the same.

**1992 Legislature:** Description remains the same.

**1993 Legislature:** Description remains the same.

**1994 Legislative Description:**

From Route 37 at Hooper east to Route 108.

**1995 Legislature:** Description remains the same.

**1996 Legislature:** Description remains the same.

**1997 Legislature:** Description remains the same.

**1998 Legislature:** Description remains the same.

**1999 Legislature:** Description remains the same.

**2000 Legislature:** Description remains the same.

## **Route 98 Cont.**

\*(A) Commission Action (April 20, 2000)

*Deleted* State Route 98 from the State System of Highways and incorporated this route as a portion of SR -97.

**2001 Legislature:** Description remains the same. *Should be deleted.*

**2002 Legislature:** Description remains the same. *Should be deleted.*

**2003 Legislature:** Description remains the same. *Should be deleted.*

**2004 Legislature:** Description remains the same. *Should be deleted.*

**2005 Legislature:** Deleted State Route 98 from the State Highway System.

\* Refers to resolution index page following.

## **Route 98**

### **COUNTY/VOLUME & RESOLUTION NO.**

A. Weber Co. 10/23

### **DESCRIPTION OF RESOLUTION CHANGE**

(A). Deletion - Deleted SR-98 from the State System of Highways and incorporated this route into a portion of SR-97.

## RESOLUTION

### Consolidation of State Highways SR-97 & SR-98 Designation of State Constructed Cross and Access Roads Roy, Weber County

WHEREAS, Section 72-4-102 of the Utah Code 1999 provides for Additions to or deletions from state highway system - Designation of highways as state highways between sessions, and

WHEREAS, the completion of Project No. STP-0097(2)0 provides a connecting segment of roadway between SR-98 traversing 5500 South in Roy and SR-97 traversing 5600 South in Roy, and

WHEREAS, the completion of Project No. STP-0097(2)0 alters and realigns local roadways connecting and crossing within the boundaries of stated project, and

WHEREAS, in the interest of route consolidation, the Region One Director recommends the highways known as SR-97 (5600 South) in Roy and SR-98 (5500 South) in Roy be combined to form a single state route and be numbered SR-97, and

WHEREAS, state constructed realignments and abandonments of local streets have occurred within the boundaries of Roy City in conjunction with Project No. STP-0097(2)0, the duly appointed officials of Roy City having been notified of the stated changes, and given substantial time to respond, have not indicated their concurrence, nor have Roy City officials indicated any opposition of proposed changes described herein, and

WHEREAS, the Program Development Division, concurring with the recommendation of the Region One Director, advocate the realignments and abandonments of local roadways in conjunction with Project No. STP-0097(2)0 be designated as residing under the jurisdiction of Roy City described herein.

**NOW THEREFORE**, be it resolved as follows:

1. SR-98 will be deleted as a state route designation in its entirety when Project No. STP-0097(2)0 is completed and open to traffic from a Jct. with SR-37 in Hooper to a Jct. with SR-108 at (3500 West) in Roy.
2. The aforementioned roadway will be incorporated as a portion of SR-97 which will henceforth be described as follows.  
(SR-97) From a junction with SR-37 in Hooper traversing easterly via 5500 South and 5600 South to Hill Air Force Base Northwest Gate a distance of 5.29± miles.

Page 2

Consolidation of State Highways  
SR-97 & SR-98  
Designation of State Constructed  
Cross and Access Roads  
Roy, Weber County

3. The new configuration of SR-97 will continue to be functionally classified Major Collector a distance of 2.03 ± miles and Urban Minor Arterial a distance of 3.26± miles.
4. Portions of state constructed roadway in conjunction with Project No. STP-0097(2)0, shall be transferred or designated as prescribed to the jurisdiction of Roy City, herein described as follows.

Portion State Route 98 Transferred to Roy City

<u>Line Name</u>	<u>Street Name</u>	<u>Eng. Sta. to Eng. Sta.</u>	<u>Meters</u>	<u>Feet</u>	<u>Miles</u>
"D" Line	5500 South	1+300 1+800	500	1640	0.31

State Constructed Roy City Street Designations

<u>Line Name</u>	<u>Street Name</u>	<u>Eng. Sta. to Eng. Sta.</u>	<u>Meters</u>	<u>Feet</u>	<u>Miles</u>
"B" Line	3650 West	1+006 1+127	121	397	0.08
"G" Line	New Street	1+000 1+188	188	617	0.12
	(Approx. 5500 So.)				
"I" Line	2500 West	1+000 1+345	345	1132	0.21
"N" Line	2300 West	1+006 1+082	76	249	0.05
<u>Total mileage transferred or designated to Roy City</u>					<u>0.77±</u>

5. Due to realignment and configuration changes inherent with Project No. STP -0097(2)0 portions of local streets have been obliterated and modified to conform to prescribed access requirements, described herein as follows.

Obliteration

<u>Line Name</u>	<u>Street Name</u>	<u>Meters</u>	<u>Feet</u>	<u>Miles</u>
"L" Line (Culdesac)	Chateau Dr.	29	95	0.02
"H" Line (Culdesac)	2550 West	67	220	0.04
"J" Line (Culdesac)	2450 West	38	125	0.02
"M" Line (Culdesac)	2350 West	1	3	0.00
"D" Line Portion	5500 South	94	308	0.06
Portion	2500 West	221	725	0.14
<u>Total Mileage Obliterated</u>				<u>0.28±</u>

6. Through the afore-mentioned actions, transfer, designations and obliterations, Roy City's net "C" mileage will increase 0.49 ± miles.

7. The afore-mentioned designations and transfer will be functionally classified as Local Roads.

Consolidation of State Highways

SR-97 & SR-98

Designation of State Constructed

Cross and Access Roads

Roy, Weber County

8. These actions will become effective when Project No. STP-0097(2)0 is completed and open to traffic and upon passage of this resolution by the Utah Transportation Commission.

9. The accompanying Memo and Exhibit "A" be made part of this resolution.

Dated on this 20<sup>th</sup> day of April 2000

UTAH TRANSPORTATION COMMISSION

[Signature]

Chairman

[Signature]

Vice-Chairman

[Signature]

Commissioner

[Signature]

Commissioner

Commissioner

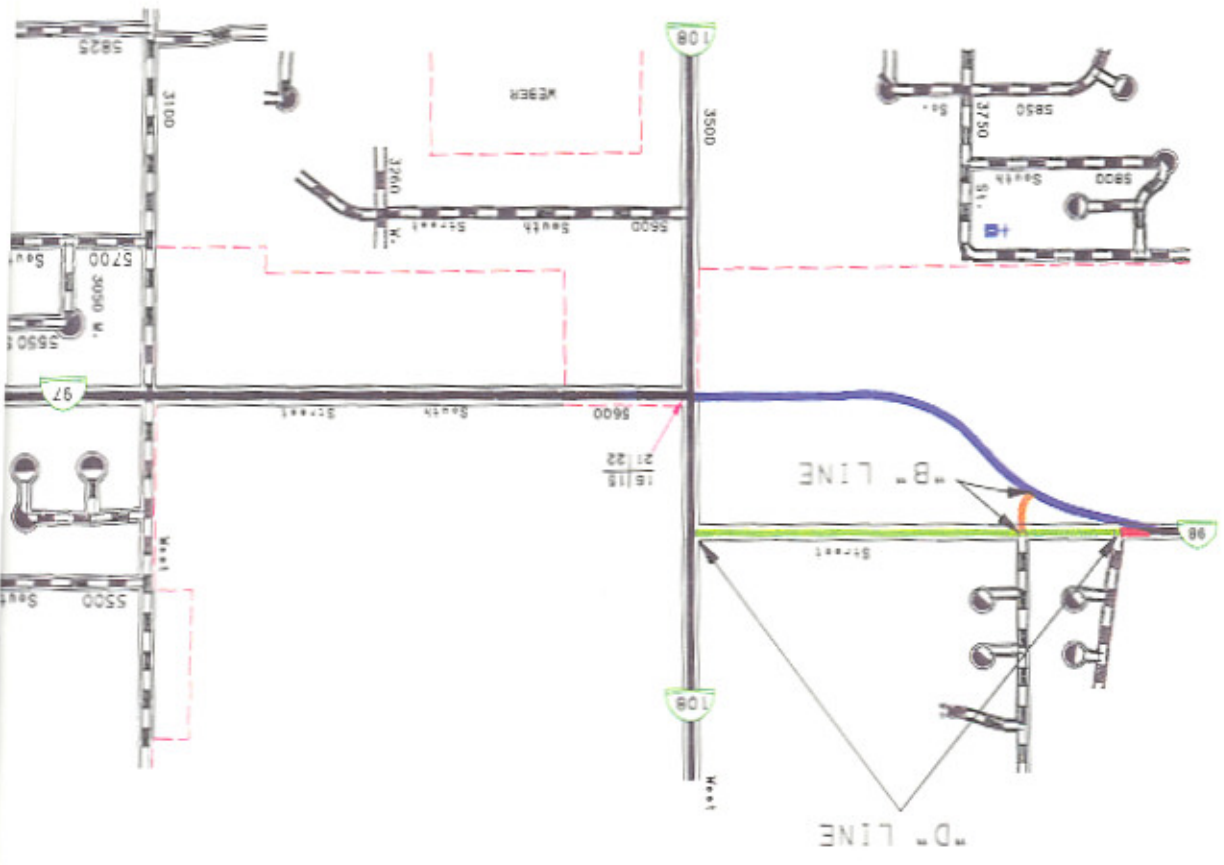
[Signature]

Commissioner

Commissioner

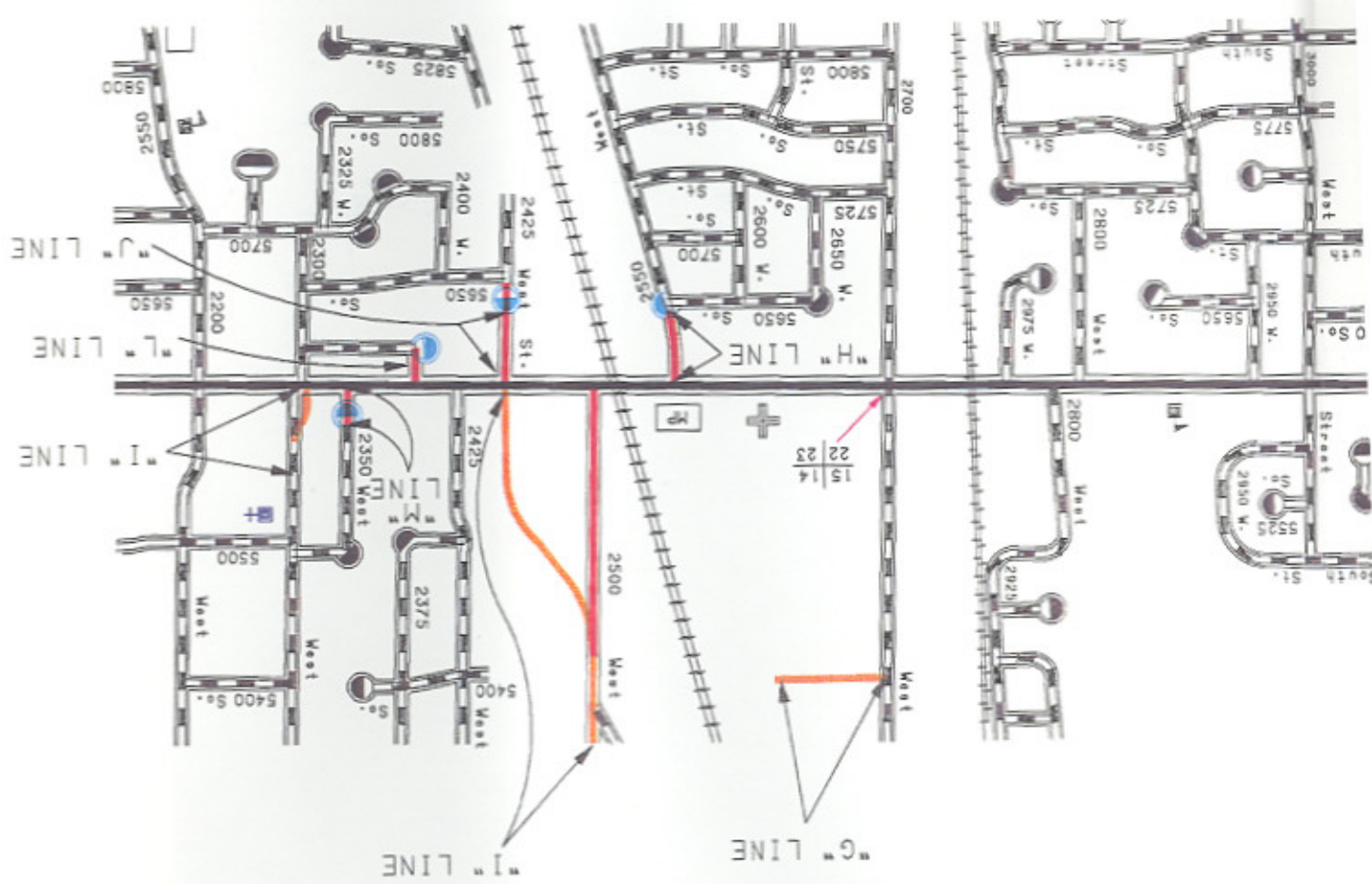
Attest: [Signature]  
Secretary

# EXHIBIT " A "





SR-98 TRANSFERRED TO ROY CITY  
 BECOMES PORTION SR-97  
 ROY CITY DESIGNATIONS  
 OBLITERATIONS  
 CULDESACS





SR-97

# MEMORANDUM

## UTAH DEPARTMENT OF TRANSPORTATION

**TO:** Glen Nielson  
Transportation Record Manager

June 11, 2001

**FROM:** Ahmad O. Jaber, P.E. *A.O.J.*  
Region One Director

**SUBJECT:** Project No. STP-0097(2)0  
SR-97 (Roy, 5600 South)  
Abandon Alley

+++++

This project was completed a couple of years ago. Now, we have a former alley on the South side of parcel 9:STAQ. This alley is land locked and doesn't have any access. This Alley is 16'x200', and UDOT won't need it in the future for any reason. We have been spending money to clean and maintain it so I would like to abandon this alley by Commissioners Resolution and Quit Claim half the width of this alley to the adjoining property owners.

Please forward this request to the Commissioners for their resolution and let me know if I can be of more assistance to you.

### Attachments

cc: Rod Terry  
Craig Fox  
Project files

SECTION LINE 15 141+000

S. R. 97 (5600 SOUTH) CENTERLINE

42.748m (140.25')

CONTROL POINT  
N 92156.2  
E 564102.  
STA 11+66  
O. 3197m L

S 89°43'10" E

22

23

10.058m (33.00')

Existing R/W Line

5600-6  
F-2

PT 11+614.332

HWY R/W LINE

10.058m (33.00')

N 0°24'29" E

60.960m (200.00')

10.058m (33.00')

SECTION LINE

N 0°24'29" E

10.058m (33.00')

+973.500

Existing R/W Line

10.058m (33.00')

N 0°24'29" E

10.058m (33.00')

+943.067

NE 1/4 NE 1/4  
SECTION 22

10.058m (33.00')

+939.040

Existing R/W Line

10.058m (33.00')

10.058m (33.00')

10.058m (33.00')

10.058m (33.00')

10.058m (33.00')

10.058m (33.00')

10.058m (33.00')

10.058m (33.00')

10.058m (33.00')

10.058m (33.00')

10.058m (33.00')

10.058m (33.00')

10.058m (33.00')

10.058m (33.00')

10.058m (33.00')

10.058m (33.00')

10.058m (33.00')

10.058m (33.00')

10.058m (33.00')

Existing R/W Line

10.058m (33.00')

10.058m (33.00')

10.058m (33.00')

10.058m (33.00')

10.058m (33.00')

10.058m (33.00')

10.058m (33.00')

10.058m (33.00')

10.058m (33.00')

10.058m (33.00')

10.058m (33.00')

10.058m (33.00')

10.058m (33.00')

10.058m (33.00')

10.058m (33.00')

10.058m (33.00')

East R/W and N/A Line

32.865m (107.82')

26.833m (88.02')

30.961m (101.58')

43.169m (141.63')

26.830m (88.35')

29.796m (97.75')

30.961m (101.58')

43.169m (141.63')

26.830m (88.35')

29.796m (97.75')

30.961m (101.58')

43.169m (141.63')

26.830m (88.35')

29.796m (97.75')

30.961m (101.58')

43.169m (141.63')

26.830m (88.35')

PERPETUAL DRAINAGE AND SLOPE EASEMENT

6.000m (19.69')

6.000m (19.69')

6.000m (19.69')

6.000m (19.69')

6.000m (19.69')

SEE SHEET 43

S. R. 97  
(5600 SOUTH)  
CENTERLINE  
5600-6  
PI 11+614.332  
Δ 0°01'35" LT.  
N 92156.1294  
E 564050.5234

F LINE  
(2700 WEST)  
CENTERLINE  
F-2  
PI 1+000.000  
Δ 0°01'52" RT.  
N 92156.1294  
E 564050.5234

Abandon Alley  
58.217m (191.00')

9.449m (31.00')

9

9:STAR

9:STAR

9:2E

153

44.5

22.71

30.000m (98.43')

+657.000

32.690m



SEE SHEET 23

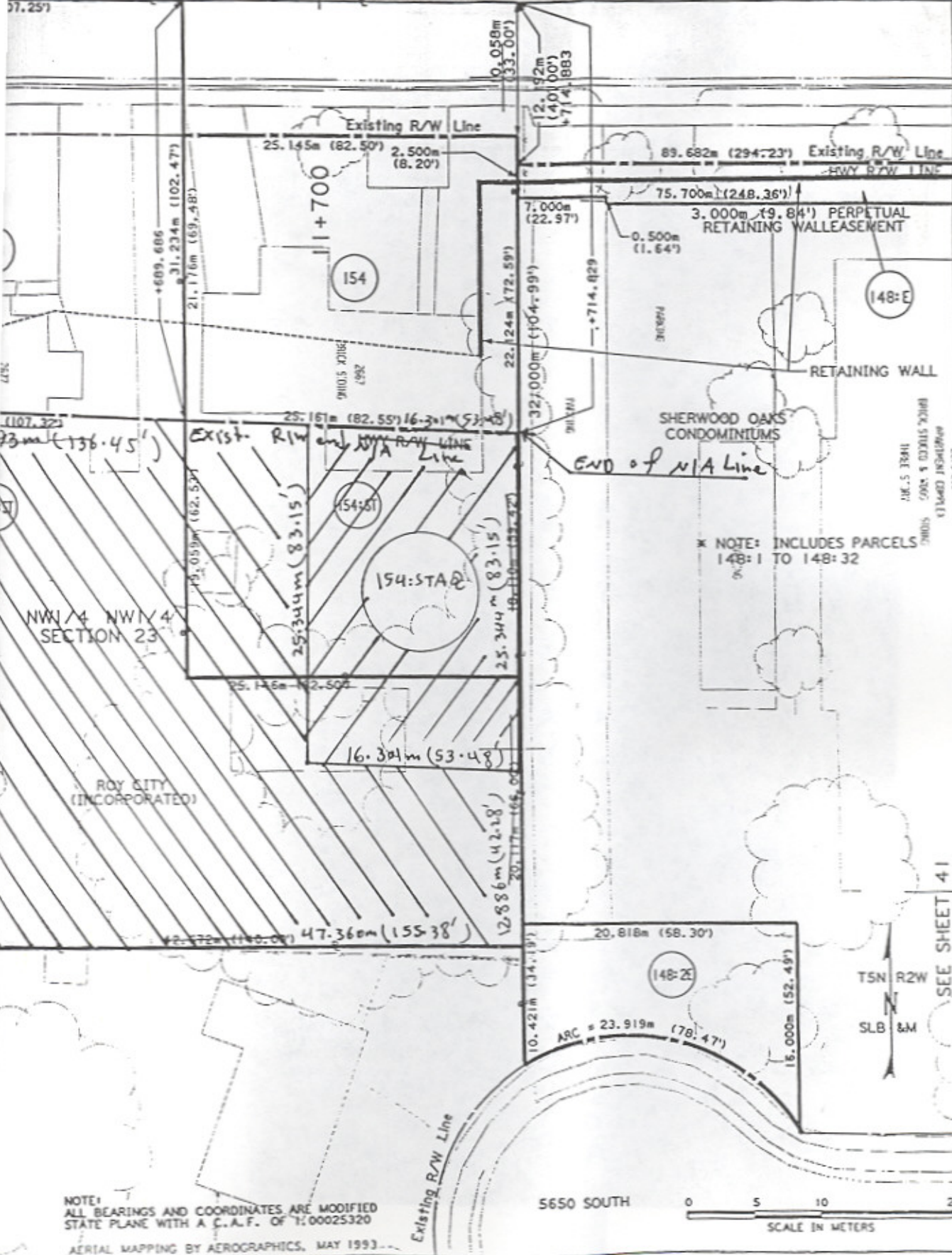
Existing R/W Line

10  
76

S 89° 44' 45" E

SECTION, LINE

07.25'



NO.	DATE	BY	REVISIONS
1	7-27-98	and 13-1-98	ADD PARCEL 9-2E

**VERSON**  
AMERICAN FORK, UTAH

UTAH DEPARTMENT OF TRANSPORTATION  
REGION 1, OGDEN, UTAH  
RIGHT-OF-WAY DESIGN

S. R. 97 (ROY 5600 SOUTH)

APPROVAL	DESIGN	CHECK	REVIEW
REGIONAL	A/C	INC	INC
DATE	DATE	DATE	DATE
PROJECT DESIGN ENGINEER	DRAWN	CHECK	BY
DATE	DATE	DATE	DATE
DATE	DATE	DATE	DATE
DATE	DATE	DATE	DATE

RIGHT-OF-WAY PLAN SHEET

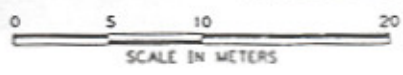
PROJECT NUMBER: STP-0097 (2)0 STP-0097 (1)1

WEBER  
COUNTY

SHEET NO. 42

NOTE:  
ALL BEARINGS AND COORDINATES ARE MODIFIED  
STATE PLANE WITH A C.A.F. OF 1:00025320  
AERIAL MAPPING BY AEROGRAPHICS, MAY 1993

5650 SOUTH



SEE SHEET 41